

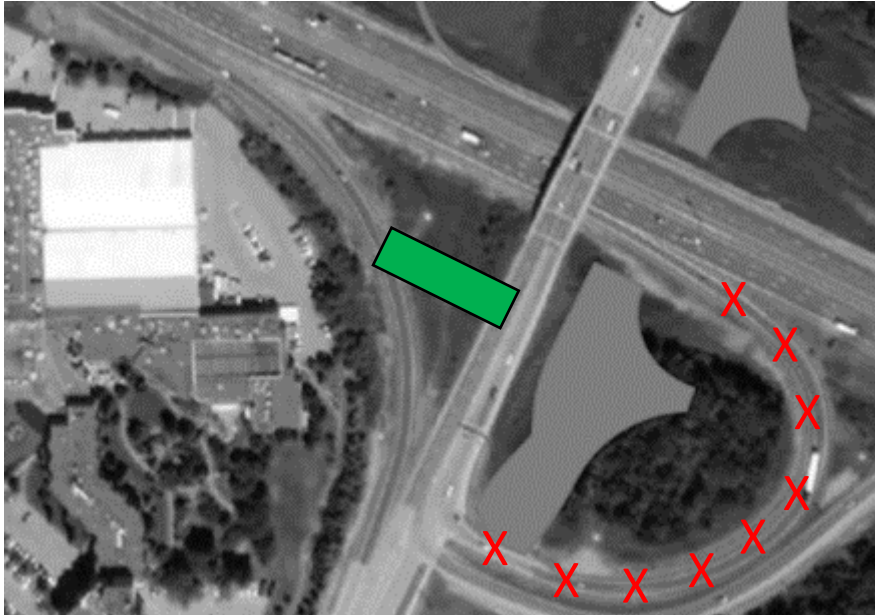


# Construction Notice Update No. 002

QEW / Glendale Avenue Interchange Reconstruction,  
Design-Build Project

A COLAS COMPANY MORRISON HERSHFIELD

## QEW Niagara Bound Off-Ramp to Glendale Northbound Detour Opening



### Construction Impacts:

- Traffic heading QEW Niagara bound to Glendale Northbound will be using the new detour ramp.
- The existing ramp to Glendale Southbound will be a shared ramp for access to both Northbound and Southbound Glendale.
- A new signalized intersection will be installed for the detour ramp.
- The existing ramp location for Glendale Northbound will be permanently closed.

### Timing:

- The detour ramp is scheduled to be open and operational on Thursday May 27<sup>th</sup>, 2021.
- The detour ramp opening will be weather permitting, and this date may change.
- This configuration will be maintained until Fall 2022.

### For More Information:

Stay up to date on the project by visiting our website at <http://qew-glendale-interchange.ca/>

Or contact us at: [GlendaleDBTeam@morrisonhershfield.com](mailto:GlendaleDBTeam@morrisonhershfield.com)