

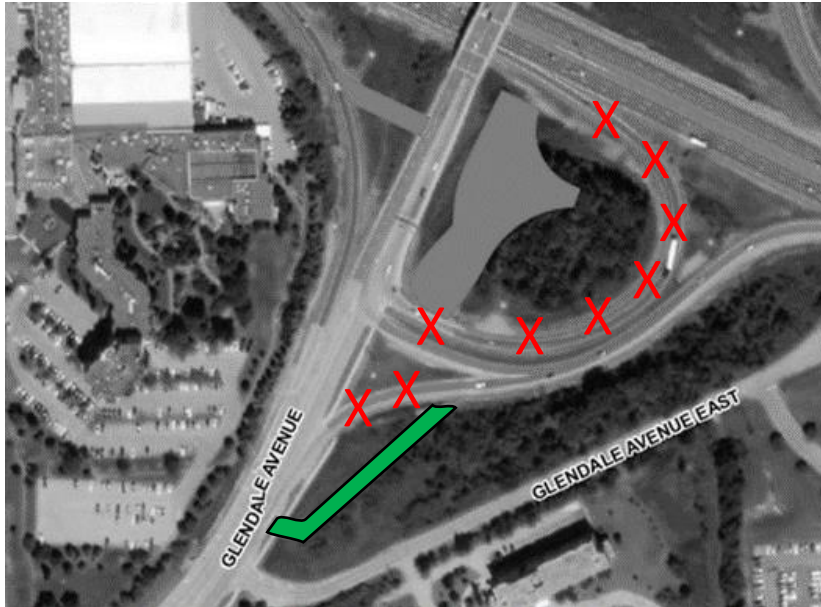


# Construction Notice Update No. 003

QEW / Glendale Avenue Interchange Reconstruction,  
Design-Build Project

A COLAS COMPANY MORRISON HERSHFIELD

## NEW Location for Glendale Northbound and Southbound On-Ramp to QEW Niagara Bound



### Construction Impacts:

- The new detour on-ramp location to QEW Niagara bound will be shifted further South toward Glendale East Avenue.
- Glendale Northbound and Southbound will both share the same ramp entrance.
- Existing on-ramp entrance to QEW Niagara for both Glendale Northbound and Southbound will be permanently closed.

### Timing:

- The detour ramp is scheduled to be open and operational on Wednesday May 26<sup>th</sup>, 2021.
- The detour ramp opening will be weather permitting, and this date may change.
- This configuration will be maintained until Fall 2022.

### For More Information:

Stay up to date on the project by visiting our website at <http://qew-glendale-interchange.ca/>

Or contact us at: [GlendaleDBTeam@morrisonhershfield.com](mailto:GlendaleDBTeam@morrisonhershfield.com)